

The epidemiology of COVID-19 and MS-related characteristics in a national sample of people with MS in China

Yao Zhang^{a,b*} Hexiang Yin^{a,b*} Yan Xu^{a,b} Tao Xu^c Bin Peng^b Liying Cui^{b,d} Shuyang Zhang, MD^{e,f}

^a Center of Multiple sclerosis and related disorders.

^b Department of Neurology, Peking Union Medical College Hospital, Peking Union Medical College & Chinese Academy of Medical Sciences, Beijing, China.

^c Department of Epidemiology and Biostatistics Institute of Basic Medical Sciences, Chinese Academy of Medical Sciences & School of Basic Medicine, Peking Union Medical College, Beijing, China.

^d Neurosciences Center, Chinese Academy of Medical Sciences, Beijing, China.

^e Department of Cardiology, Peking Union Medical College Hospital, Peking Union Medical College, Chinese Academy of Medical Sciences (CAMS), Beijing, China.

^f National Rare Diseases Registry System of China, Beijing, China.

* These authors have contributed equally to this work.

Background

Few studies have focused on immune status and disease activity in MS patients during the coronavirus disease 2019 (COVID-19) pandemic. The aim of this study is to investigate immune status, COVID-19 infection, and attacks in MS patients during the pandemic.

Methods

An online questionnaire about COVID-19 infection, MS attack, and MS treatment during the pandemic was administered to all 525 MS patients registered in our hospital database from January 1, 2011, to June 1, 2020, only 384 responded, of which 361 patients could be included in the final analysis.

Results

During the pandemic, 42.1% of the 361 patients and 65.0% of the 234 patients on immunotherapies were exposed to teriflunomide. Compared to patients who didn't receive treatment, patients exposed to DMTs had significantly lower levels of neutrophils ($P < 0.01$) and immunoglobulin G ($P < 0.01$), patients exposed to immunosuppressants had significantly lower levels of immunoglobulin G ($P < 0.05$). Over 80% of our patients followed effective protective measures and none of the 361 MS patients in our cohort contracted COVID-19. Patients whose treatment was disrupted had a significantly higher annualized relapse rate (ARR) during than before the pandemic ($P < 0.01$), while the ARR of patients with continuous treatment or without treatment remained unchanged.

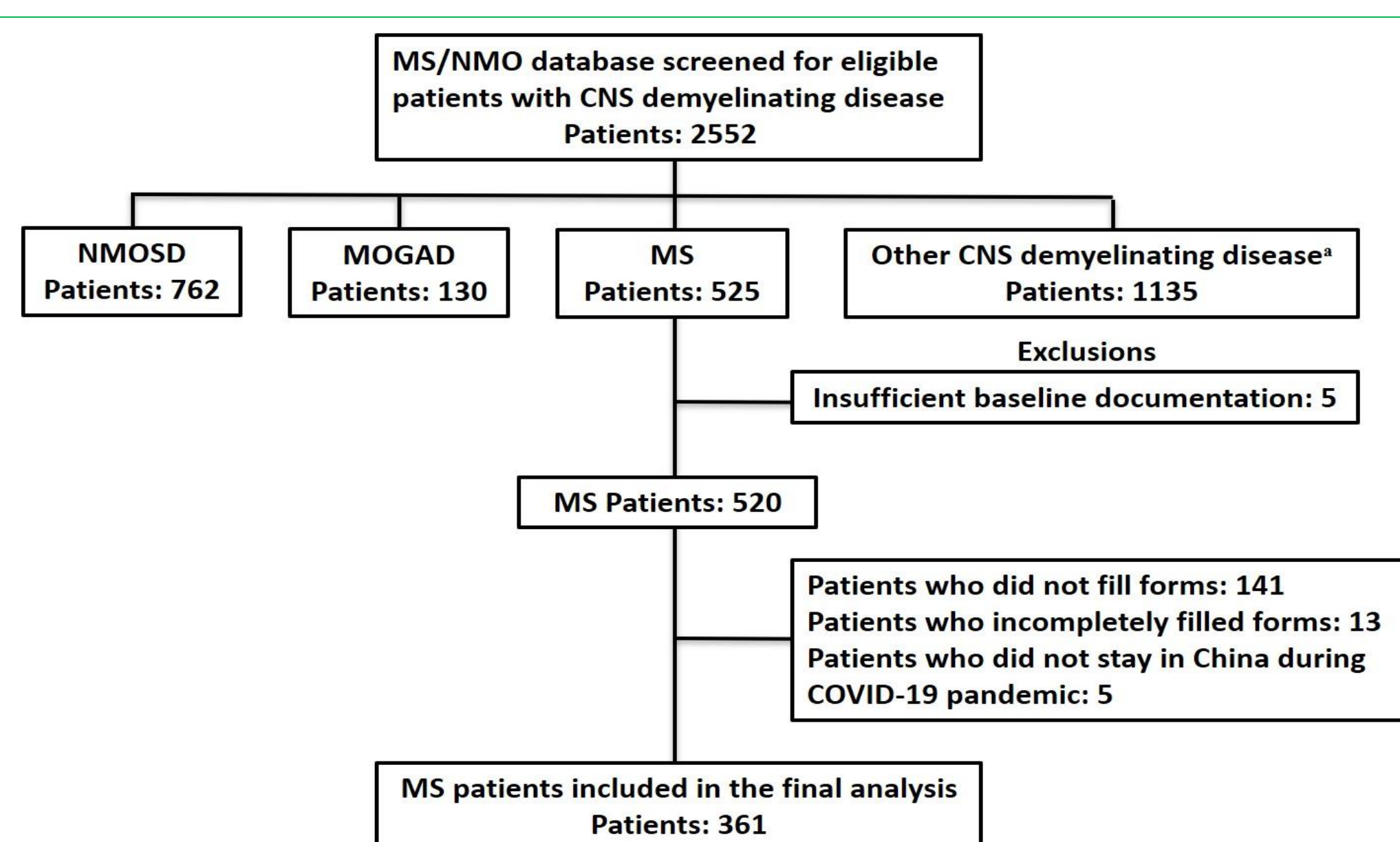


Figure 2 Flow chart of data processing and exclusions

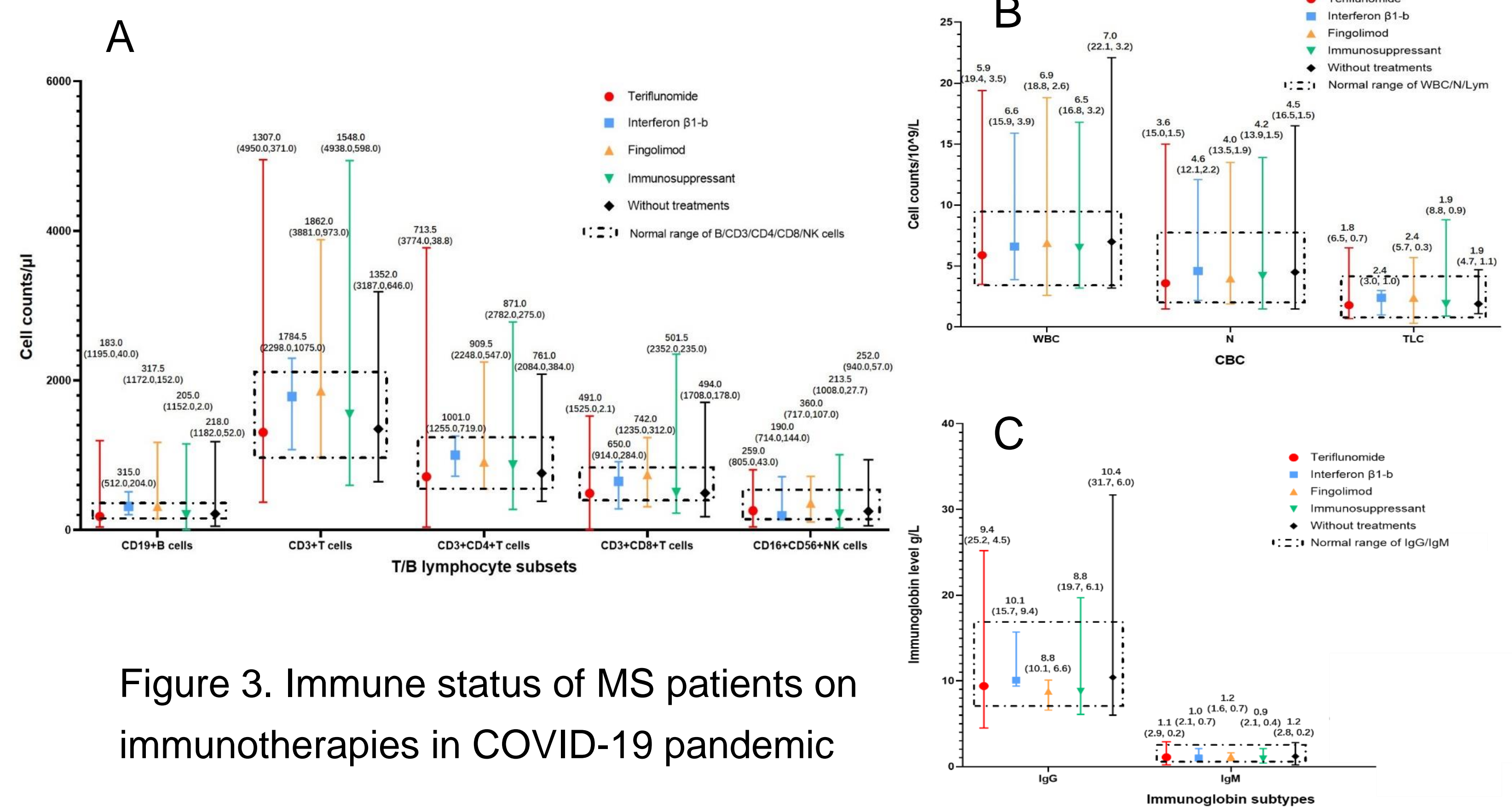


Figure 3. Immune status of MS patients on immunotherapies in COVID-19 pandemic

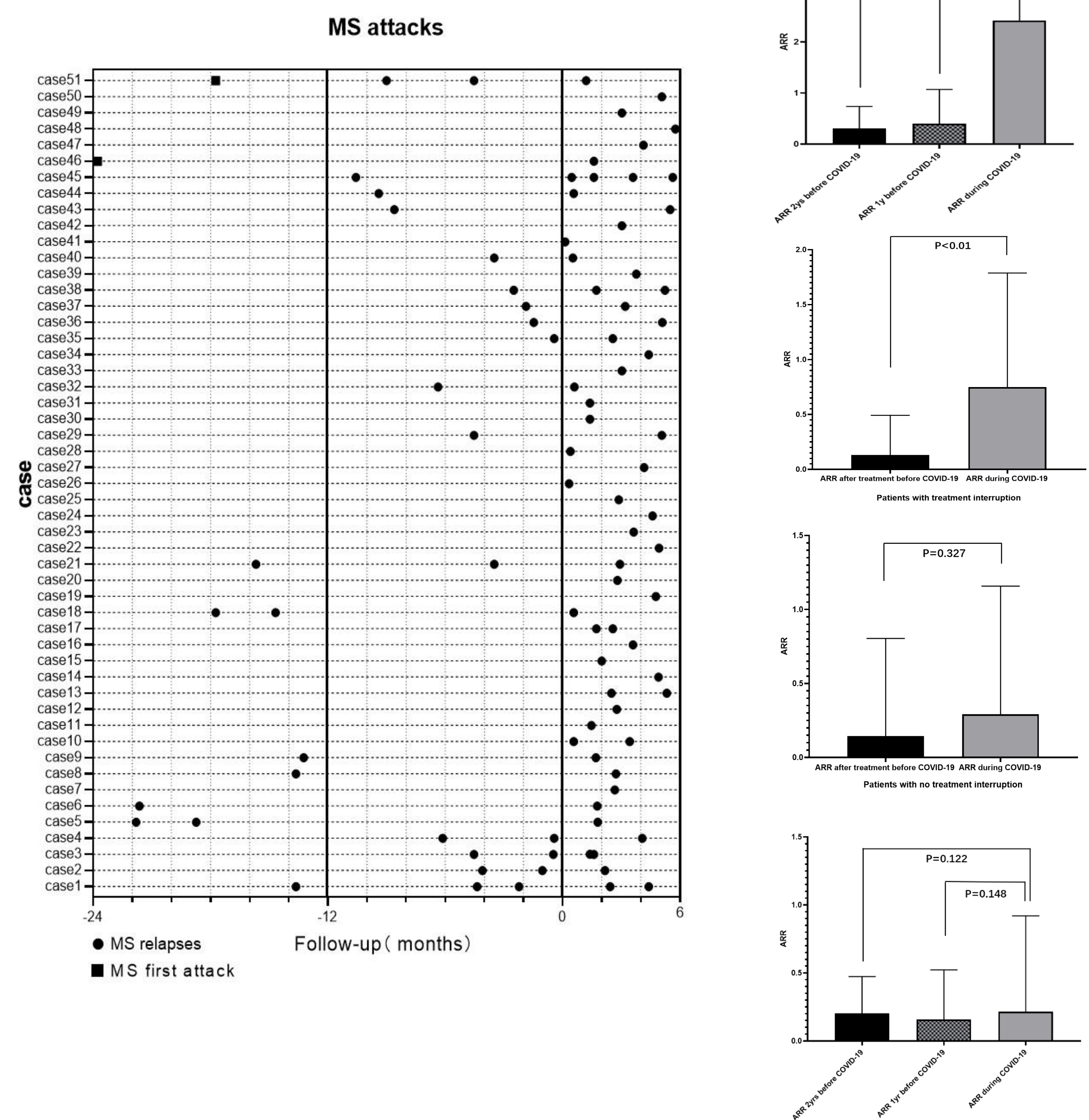


Figure 4. Impact of COVID-19 pandemic on MS attacks

Conclusion

During the pandemic, the risk of MS attack due to treatment disruption possibly outweighs the risk of COVID-19 infection under preventive measures and MS treatment maintenance might be necessary.

